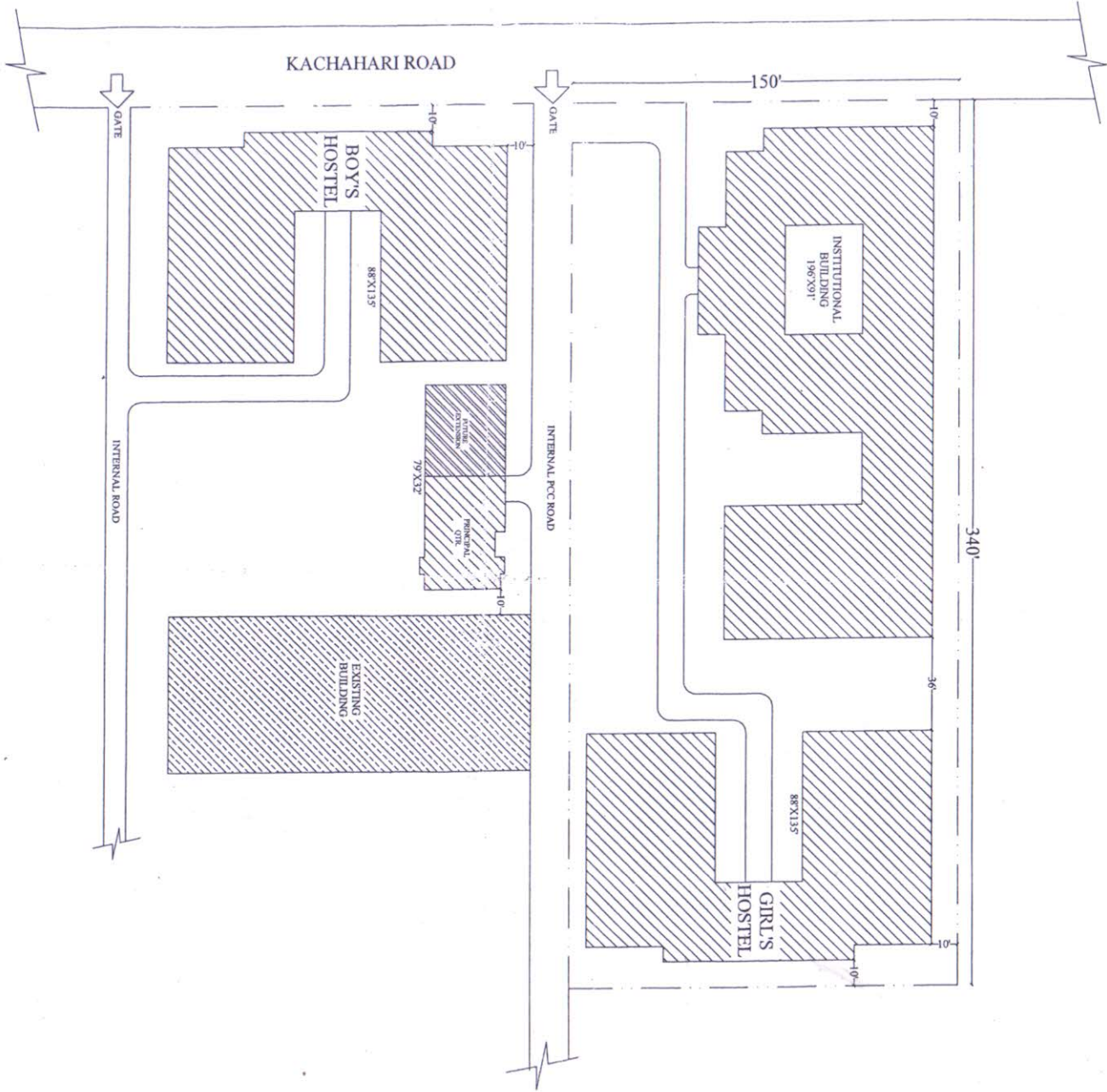


Building Plan



Project:-
PROPOSED SITE PLAN OF CTE
BLDG. AT SAHARSA

Sheet Title:
Site Plan



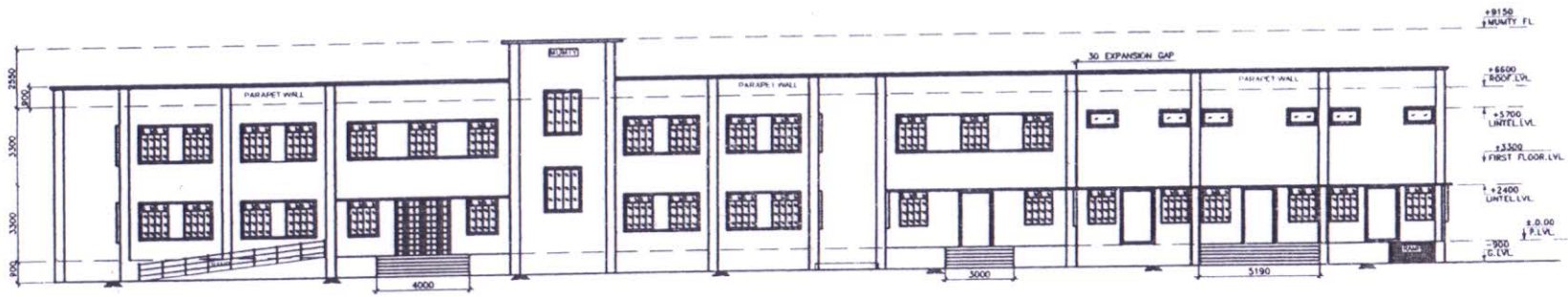
Date:-
30.03.2017

Draughtsman
M. H. J. K.
7.4.17

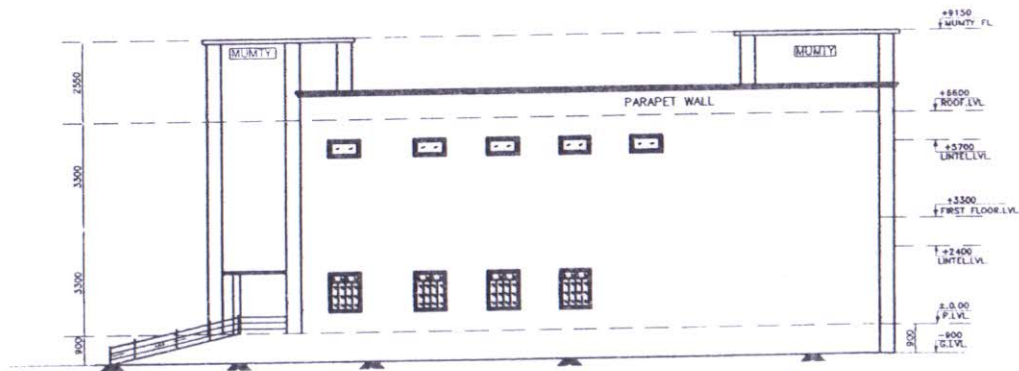
Architect

Sr. Architect

Bihar State Educational
Infrastructure Development
Corporation Ltd, Patna



FRONT ELEVATION
(SCALE 1:100)



RIGHT SIDE ELEVATION
(SCALE 1:75)

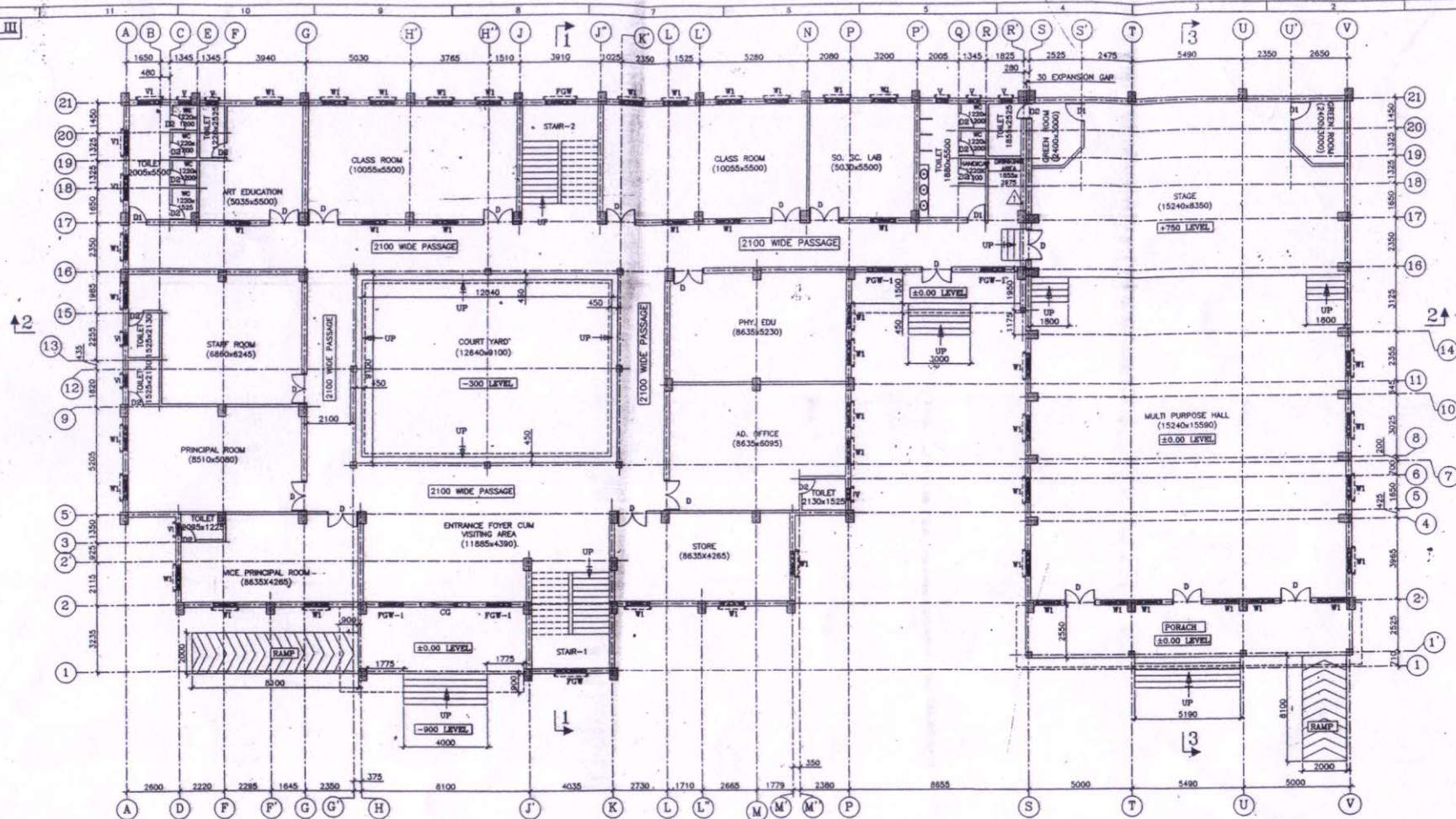
BIHAR STATE EDUCATIONAL INFRASTRUCTURE DEVELOPMENT CORPORATION LTD. SHIKSHA BHAWAN, SAIDPUR, PATNA			
 DRAUGHTSMAN BSEIDC, PATNA	 ARCH. BSEIDC, PATNA	 SENIOR (ARCH.) BSEIDC, PATNA	 C.CONS.(TECH.) BSEIDC, PATNA
PROJECT	PROPOSED INSTITUTIONAL BUILDING OF CTE		
DEPT	BIHAR STATE EDUCATIONAL INFRASTRUCTURE DEVELOPMENT CORPORATION LTD SHIKSHA BHAWAN, SAIDPUR, PATNA		
ARCHT. AND CONSULTANT	 RANCHI DESIGN & CONSULTANCY SERVICES PVT. LTD. SOUTH OFFICE PARA, NEAR ST. XAVIER SCHOOL, DORANDA, RANCHI-834002		
CHECKED & APPROVED	S. LOPE	FRONT ELEVATION & RIGHT SIDE ELEVATION	
DESIGN BY	S.A.		
DRAWN BY	Surbh		
SCALE	SCALE AS SHOWN	DRG. NO. - RD/CS/BSEIDC/035/CTE/001 SHEET 4 OF 5 H.V. 10/10	

NOTES:-
 1. ALL DIMENSIONS AND LEVELS ARE IN mm & FIGURED DIMENSIONS SHALL BE FOLLOWED
 2. ±0.00 LEVEL CORRESPONDS TO PLINTH LEVEL(P.L.) OF BUILDING WHICH IS 900mm ABOVE ABSOLUTE GROUND LEVEL(G.L.)

3. ALL RCC WORK SHALL BE OF M25 GRADE CONCRETE
 4. BRICKWORK SHALL BE WITH 100A BRICKS IN CEMENT MORTAR 1:6

DATE	BY

SEISMIC ZONE III



GROUND FLOOR PLAN
 AREA - 1434.02 sqm (15430.06 sqft.)
 (SCALE 1:100)

SCHEDULE OF DOORS & WINDOWS G.F					
SL.NO	TYPE	WIDTH	HEIGHT	NO.	DESCRIPTION
1	D	1900	2400	17	DOUBLE PANEL WOODEN DOOR
2	D1	900	2400	4	SINGLE PANEL WOODEN DOOR
3	D2	750	2400	13	SINGLE PANEL WOODEN DOOR
4	W1	1200	1600	48	STEEL FRAME GLAZED WINDOW
5	V	900	900	9	STEEL GLAZED VENTILATION
6	V1	1200	600	3	STEEL GLAZED VENTILATION
7	FGW	1500	1800	2	STEEL FRAME GLAZED WINDOW
8	FGW-1	1200	1500	4	STEEL FRAME GLAZED WINDOW
9	C.G	2400	2400	1	COLLAPSIBLE GATE

NOTES:-

- ALL DIMENSIONS AND LEVELS ARE IN mm. & FIGURED DIMENSIONS SHALL BE FOLLOWED.
- ±0.00 LEVEL CORRESPONDS TO PLINTH LEVEL(P.L.) OF BUILDING, WHICH IS 900mm ABOVE ABSOLUTE GROUND LEVEL(G.L.).
- ALL RCC WORK SHALL BE OF M25 GRADE CONCRETE.
- BRICKWORK SHALL BE WITH 100A BRICKS IN CEMENT MORTAR 1:6.

Principal
Principal
 College of Teacher Education
 SAHARSA (BIHAR)



BIHAR STATE EDUCATIONAL INFRASTRUCTURE DEVELOPMENT CORPORATION LTD. SHIKSHA BHAWAN, SAIDPUR, PATNA			
ARCH. BSEIDC, PATNA	SENIOR (ARCH.) BSEIDC, PATNA	S.E. BSEIDC, PATNA	C.CON.S.(TECH.) BSEIDC, PATNA
PROJECT	PROPOSED INSTITUTIONAL BUILDING OF CTE		
DEPT.	BIHAR STATE EDUCATIONAL INFRASTRUCTURE DEVELOPMENT CORPORATION LTD. SHIKSHA BHAWAN, SAIDPUR, PATNA		
ARCHT. AND CONSULTANT	RANCHI DESIGN & CONSULTANCY SERVICES PVT. LTD. SOUTH OFFICE PARA, NEAR ST.XAVIER SCHOOL DORANDA, RANCHI-834002		
CREATED & APPROVED	S.L.GOPE		
DESIGN BY	S.A.		
DRAWN BY	Sumit		
SCALE	AS SHOWN		
GROUND FLOOR PLAN			
DRC. NO.-RD/05/BSEIDC/0035/CIE/001 SHEET 1 OF 1 REV			

PROVIDED OF WALL	12/1/16	R.N. BERA
DATE	BY	

